



GMV A/S - v7

Winlet

Effective and intelligent glazing-
and cladding robots for windows,
glass, and other airtight material.

SALEM
FABRICATION SUPPLIES

 **GMV**
Cranes and Handling



What is a Winlet?

Faster, safer, and smarter glass and window installations.

The Winlet products consists of a series of self-propelled vacuum lifts using vacuum and hydraulics to lift and handle sheet glass, windows, and other airtight material.

All Winlets have off-road wheel drive on the front axle and movements of the load is hydraulically actuated.

Winlet comes in 11 different overall models each of which has a range of configuration possibilities:

Winlet 2200 Crawler	Page 4
Winlet 2200 Crawler ER	Page 6
Winlet 2200	Page 8
Winlet 1730	Page 10
Winlet 1320	Page 12
Winlet 1265	Page 14
Winlet 880	Page 16
Winlet 825	Page 18
Winlet Lasius 1t	Page 22
Winlet Lasius 1,5t	Page 24
Winlet Accessories	Page 26

Why should you invest in a Winlet?



Manual installations of glass and windows might seem like the cheapest solution compared to investing in a glazing robot.

However, manual installations require a large workforce in order to lift and handle the glass. If you also consider the high risks of injuries and material damage, the costs will long surpass the investment you will make in a glazing robot.



With a Winlet, glass installation is possible with just one operator.

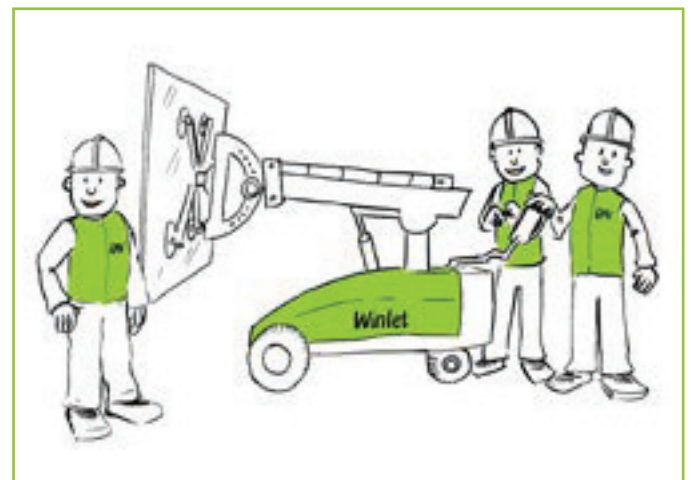
All Winlet models are fully hydraulic which ensures the robustness, speed and power required on a construction site.

The hydraulic fine lift and side shift on Winlet ensures that the installation is carried out easily and precisely - every time!



Safety is the most important feature on a Winlet. The Winlet computer is always monitoring all functions including position of the lifting arm and capacity limits. This is to ensure safety at all times during use.

All Winlets are equipped with a safety switch, an emergency stop and emergency lowering of the hydraulics is always possible on a Winlet.



When it comes to safe and effective glass and window installation there is a much smarter way. - It's called a Winlet!

Winlet - Faster, Safer, Smarter!



Winlet 2200 Crawler

Crawled traction and low ground pressure

Winlet Crawler Bi-Leveling can operate in all types of terrain including stairs. With this Winlet you get maximum maneuverability and precision even in the narrowest spaces, with a minimum of ground pressure - and without any kind of outriggers needed at any time.

Dynamic leveling

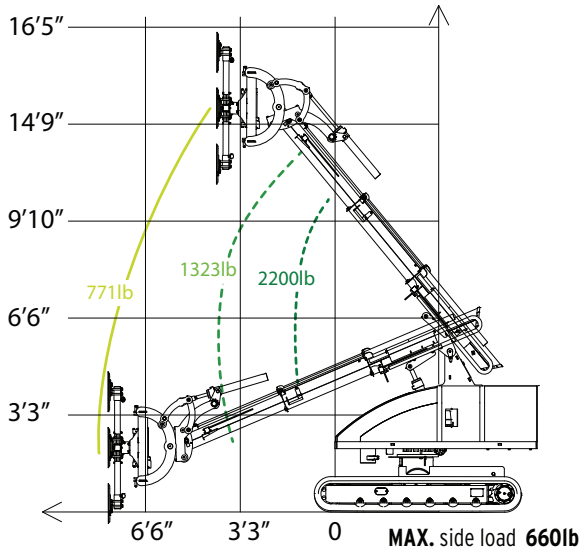
The leveling of the manipulator is completely automatic when using the Dynamic Leveling System -even on slopes or uneven surfaces.

Winlet Crawler Bi-Leveling will automatically adjust both on longitudinal slopes until 15° (27%) and on lateral slopes until 14° (25%). Always ensuring a safe and effective transportation or installation.

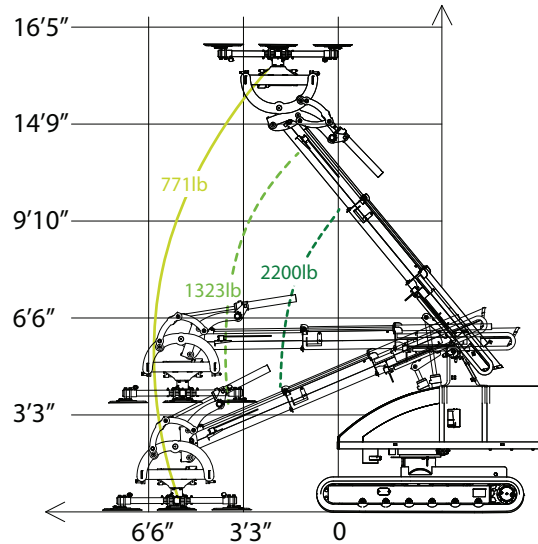


Winlet 2200 Crawler

REACH DIAGRAM

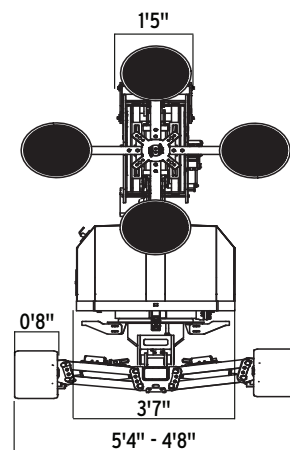
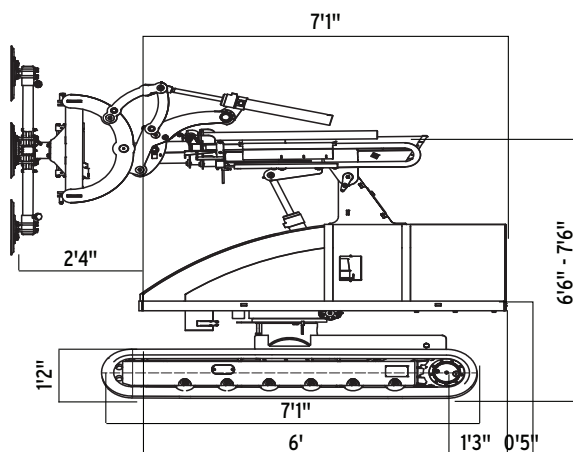


PICKUP AND PLACE DIAGRAM



SPECIFICATIONS*

EXTERNAL LENGTH	9'5"	MAX REACH - Carrier tilted forward	8'6"
EXTERNAL WIDTH	4'9"-5'4"	HYDRAULIC SIDE SHIFT	3.1IN
MAX LIFTING CAPACITY	2200 LBS	FINE LIFT ON ARM	7.9IN
MAX LIFTING HEIGHT - Raised carrier	14'9"	TILT FUNCTION OF THE FRONT - Horizontal arm	BACK: 43° FORTH: 88°
MAX LIFTING HEIGHT - Lowered carrier	13'9"	HYDRAULIC ROTATION	360 °
TOTAL WEIGHT	6283 LBS	SUCTION CUPS	4 x 16"
MAX OVERHEAD INSTALLATION - Raised carrier	16'9"	BATTERIES	48V, 420AH
MAX OVERHEAD INSTALLATION - Lowered carrier	15'6"	MAX SPEED	1.36MPH
MAX REACH - No tilt on carrier	7'3"		



* The dimensions are indicative and may vary +/- 10mm. The photographs and/or drawings in this document are for illustrative purposes only.



**WITH
EXTENDED
REACH!**

Winlet 2200 Crawler ER

Winlet Crawler with extended reach!

Winlet 2200 Crawler ER is an upgraded version of our tracked glazing robot. This version has an extended telescopic arm reaching a maximum horizontal lifting height of just over 6 meters!

As the original Crawler, it can operate in all types of terrain including stairs ensuring maximum maneuverability and precision even in the narrowest spaces, with a minimum of ground pressure - and without any kind of outriggers needed at any time.

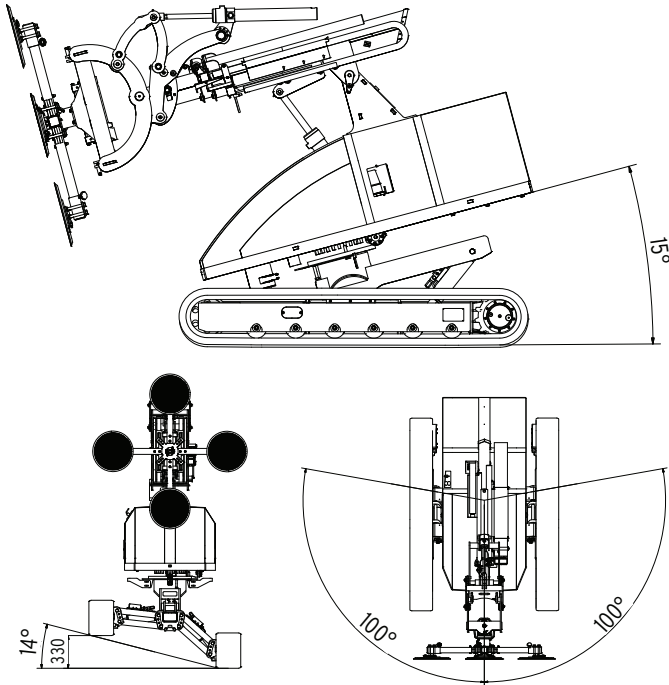
Dynamic leveling

The leveling of the manipulator is completely automatic when using the Dynamic Leveling System - even on slopes or uneven surfaces.

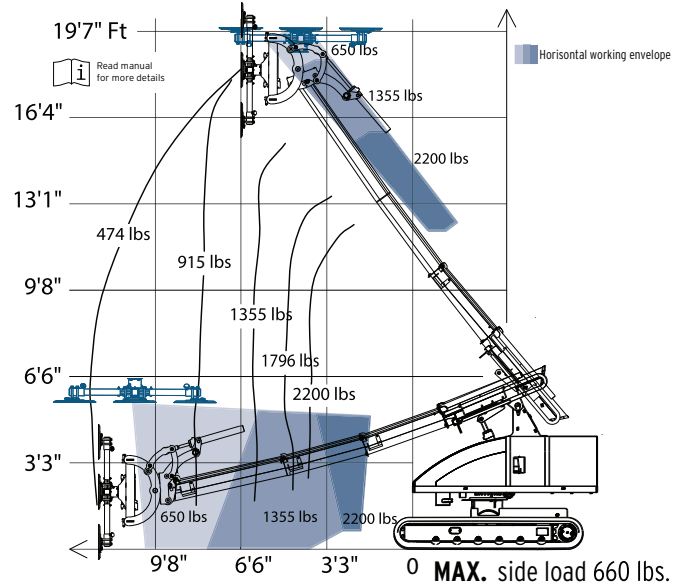
Winlet Crawler Bi-Leveling will automatically adjust both on longitudinal slopes until 15° (27%) and lateral slopes until 14° (25%) at the same time, always ensuring a safe and effective transportation or installation.



Winlet 2200 Crawler ER

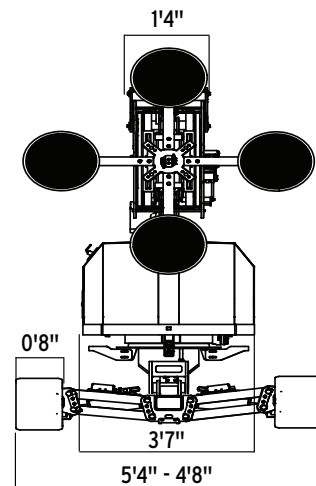
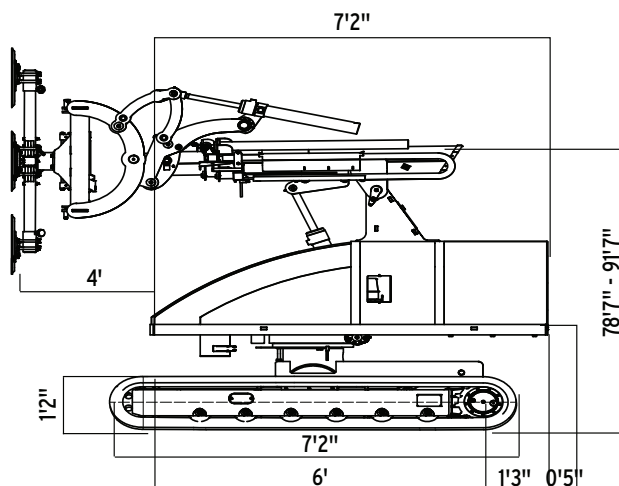


MAX. LOAD/REACH KG



SPECIFICATIONS*

EXTERNAL LENGTH	11'6"	MIN DISTANCE FRONT TO SUCTION CUP	3'3"
EXTERNAL WIDTH	4'8" - 5'4"	MAX DISTANCE FRONT TO SUCTION CUP	12'4"
EXTERNAL HEIGHT	7'0"	HYDRAULIC SIDE SHIFT	3'11"
TOTAL WEIGHT	6570 LBS	HYDRAULIC FINE LIFT ON ARM	7'9"11"
MAX LIFTING CAPACITY	2205 LBS	HYDRAULIC ROTATION	360°
MAX VERTICAL LIFTING HEIGHT - Raised carrier	18'0"	TILT FUNCTION OF THE FRONT - Horizontal arm	BACK: 43° FORTH: 88°
MAX VERTICAL LIFTING HEIGHT - Lowered carrier	17'3"	SUCTION CUPS	4 x 16"
MAX HORIZONTAL LIFTING HEIGHT - Raised carrier	19'8"	BATTERIES	48V, 420AH
MAX HORIZONTAL LIFTING HEIGHT - Lowered carrier	19'2"	MAX SPEED	1.36MPH
MAX HORIZONTAL LIFTING HEIGHT - Suction cups down, lowered carrier	5'1"		



* The dimensions are indicative and may vary +/- 10mm. The photographs and/or drawings in this document are for illustrative purposes only.



Available with:
PSAC - Proportional Single Axis Control
or MAC - Multi Axis Control

Winlet 2200

The glazing robot with a 1 tonne capacity

Winlet 2200 can lift up to 2200 kg but still has the ability to work across rough terrain. Weighing just 1.816 kg with full counterweights, it is also designed for operation across low load bearing floors.

Maximum control

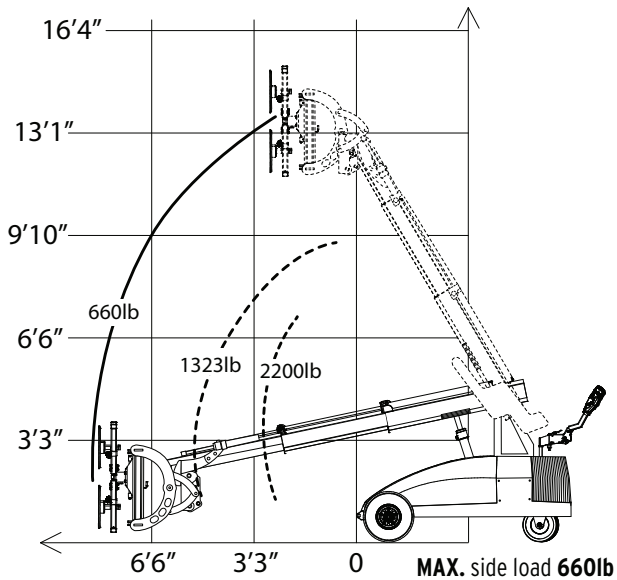
An intelligent gyroscopic hydraulic system makes sure the load stays in the same position when an element is lifted with the main arm.

The glazing robot can also install glass panels directly overhead up to a height of 4.1 meters, making it ideal for installing glazed cupolas and roofs.

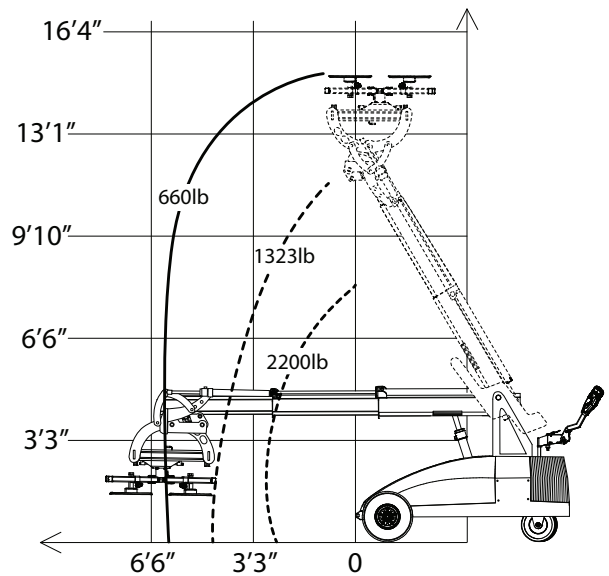


Winlet 2200

REACH DIAGRAM

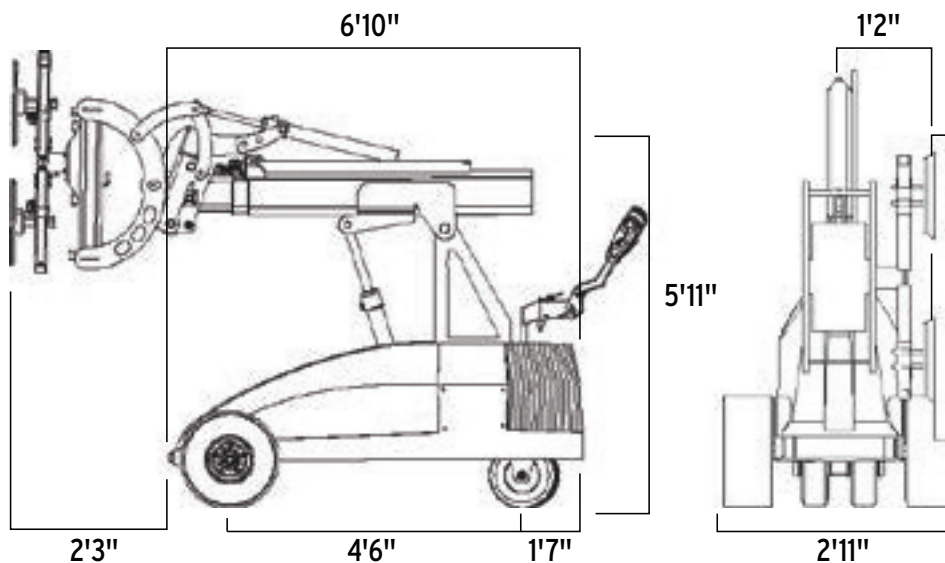


PICKUP AND PLACE DIAGRAM



SPECIFICATIONS*

EXTERNAL LENGTH	6'10"	MAX LIFTING HEIGHT - to center of lifting yoke	13'5"
EXTERNAL WIDTH	2'11"	HYDRAULIC SIDE SHIFT	3'IN
MAX LIFTING CAPACITY	2200 LBS	HYDRAULIC FINE LIFT ON ARM	7'9"IN
MAX LOAD AT MAX EXTENSION	661 LBS	TILT FUNCTION OF THE FRONT - Horizontal arm	BACK: 43° FORTH: 88°
MAX SIDE MOUNTED LOAD	661 LBS	HYDRAULIC ROTATION	360 °
TOTAL WEIGHT - Excl. counterweights	2954 LBS	SUCTION CUPS	4 x 16
TOTAL WEIGHT - Incl. counterweights	3968 LBS	BATTERIES	2 X 150 AH
EXTENSION MIN/MAX - Front bumper to suction cup	2' / 8'2"	MAX SPEED	0-5 KPH



* The dimensions are indicative and may vary +/- 10mm. The photographs and/or drawings in this document are for illustrative purposes only.



Available with:
PSAC - Proportional Single Axis Control
or MAC - Multi Axis Control

Winlet 1730

Superior lifting capacity and reach

Winlet 1730 glazing robot has an impressive reach while the unique double extension of the lifting arm makes the machine extremely compact during transportation.

The glazing robot has a load capacity of 1730 lbs and has 6 hydraulic functions with both lateral/vertical movement and rotation being hydraulically actuated.

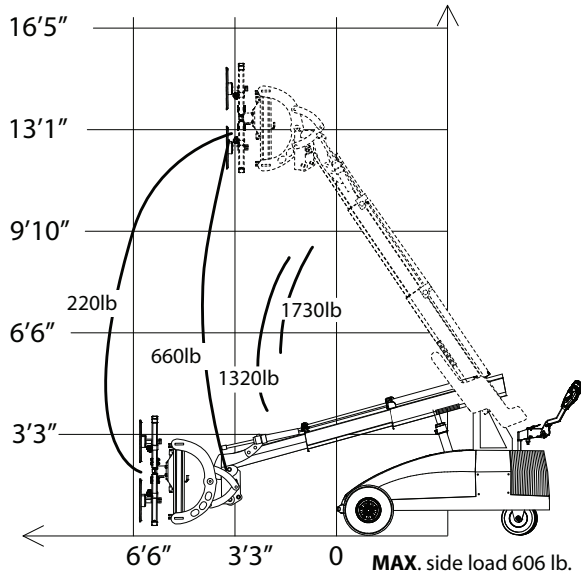
Maximum safety

Winlet 1730 is equipped with a unique safety monitoring system which means that the position of the machines front is always known and is communicated to the Winlet controller, thereby avoiding dangerous situations.

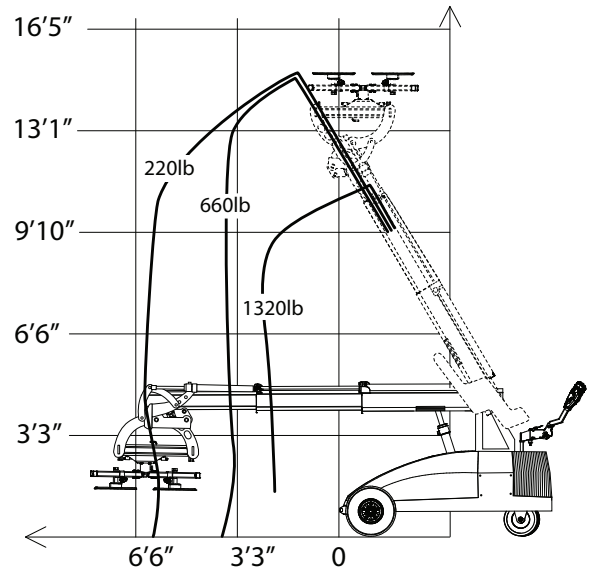


Winlet 1730

REACH DIAGRAM

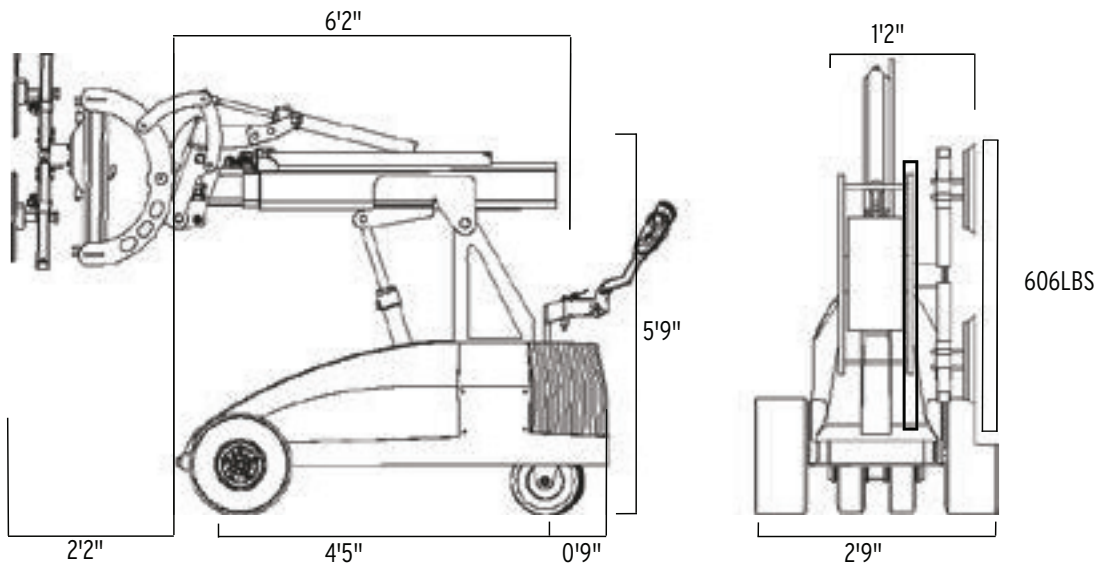


PICKUP AND PLACE DIAGRAM



SPECIFICATIONS*

EXTERNAL LENGTH	6'2"	MAX LIFTING HEIGHT - to center of lifting yoke	13'
EXTERNAL WIDTH	2'9"	HYDRAULIC SIDE SHIFT	3'IN
MAX LIFTING CAPACITY	1730 LBS	HYDRAULIC FINE LIFT ON ARM	7'9"
MAX LOAD AT MAX EXTENSION	220 LBS	TILT FUNCTION OF THE FRONT - Horizontal arm	BACK: 42° FORTH: 79°
MAX SIDE MOUNTED LOAD	606 LBS	HYDRAULIC ROTATION	360 °
TOTAL WEIGHT excl. counterweights	2517 LBS	SUCTION CUPS	4 x 16
TOTAL WEIGHT incl. counterweights	3134 LBS	BATTERIES	2 X 150 AH
EXTENSION MIN/MAX - Front bumper to suction cup	2'2" / 8'2"	MAX SPEED	0-5 KPH



* The dimensions are indicative and may vary +/- 10mm. The photographs and/or drawings in this document are for illustrative purposes only.



Winlet 1320

Minimum space - Maximum capacity

With a load capacity of 1320 lbs. Winlet 1320 is designed to handle heavier windows, sheet glass and other airtight material in the construction industry.

The Winlet 1320 has 4 hydraulic functions and a vacuum swivel.

High precision and power

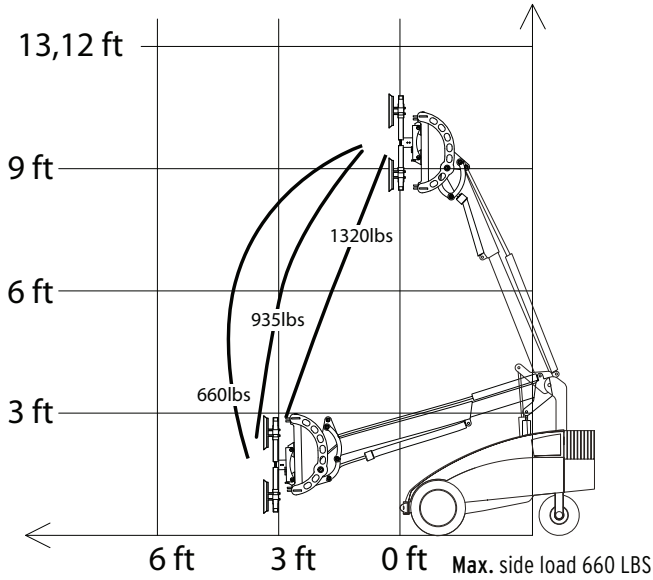
The unique adjustment options for the suction cups and the linear movements at the front make the Winlet 1320 an obvious choice for installation jobs where precision is important, while enabling items of up to 1320 kg to be handled without back strain.

The powerful wheel drive makes Winlet 1320 ideal not only indoors but also in outdoor terrain.

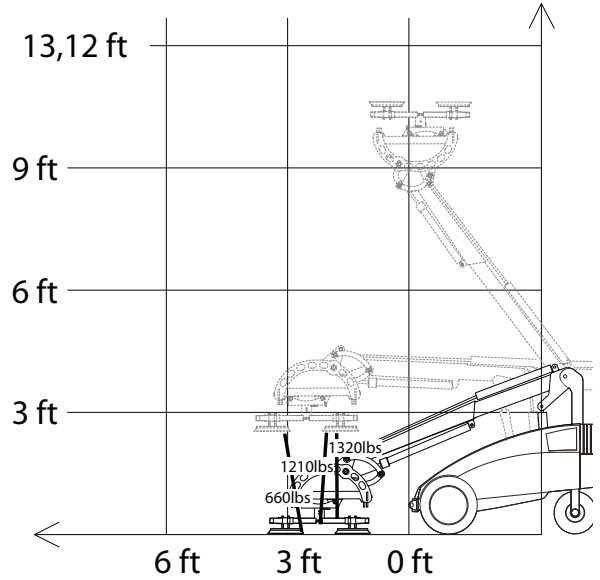


Winlet 1320

REACH DIAGRAM

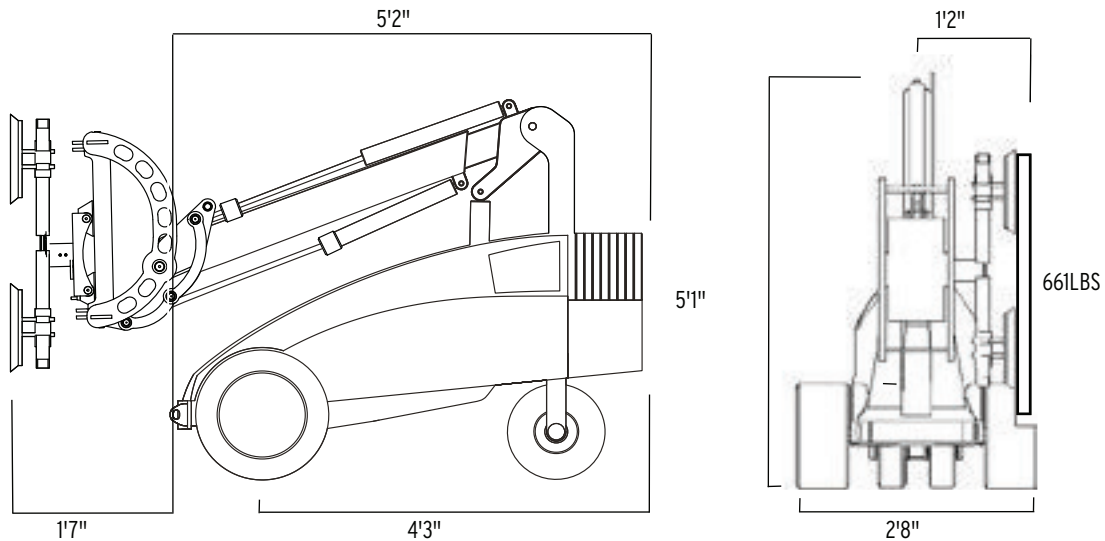


PICKUP AND PLACE DIAGRAM



SPECIFICATIONS*

EXTERNAL LENGTH	5'2"	MAX LIFTING HEIGHT - to center of lifting yoke	10'10"
EXTERNAL WIDTH	2'8"	SIDE SHIFT	4'IN
MAX LOAD	1320 LBS	HYDRAULIC FINE LIFT ON ARM	8'
MAX LOAD AT MAX EXTENSION	660 LBS	TILT FUNCTION OF THE FRONT - Horizontal arm	BACK: 30° FORTH: 86°
MAX SIDE MOUNTED LOAD	660 LBS	ROTATION	ENDLESS
TOTAL WEIGHT excl. counterweights	1905 LBS	SUCTION CUPS	4 X 15"
TOTAL WEIGHT incl. counterweights	2335 LBS	BATTERIES	2 X 95 AH
EXTENSION MIN/MAX- front bumper to suction cup	2' / 4'3"	MAX SPEED	0-5 KPH



* The dimensions are indicative and may vary +/- 10mm. The photographs and/or drawings in this document are for illustrative purposes only.



Winlet 1265

Minimum space - Fully hydraulic

Winlet 1265 is the smallest of our fully hydraulic glazing robots with a load capacity of 1265 lbs.

Winlet 1265 has 6 hydraulic functions, with both lateral/vertical movement and rotation being hydraulically triggered.

The movements of the front of Winlet 1265 are 100% linear, which is required by the professional users when, for example, installing glass in prefabricated frames.

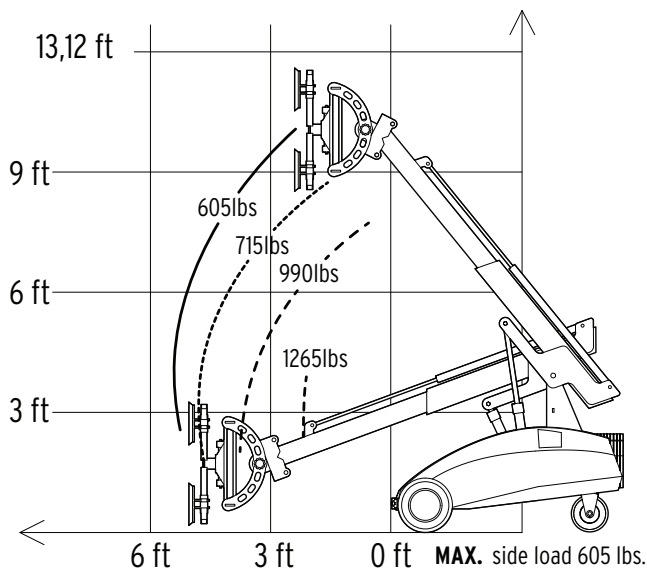
Safe and precise

Winlet 1265 has a unique "gyro function", which ensures that the glass is automatically maintained in the same position when an element is lifted with the main arm.

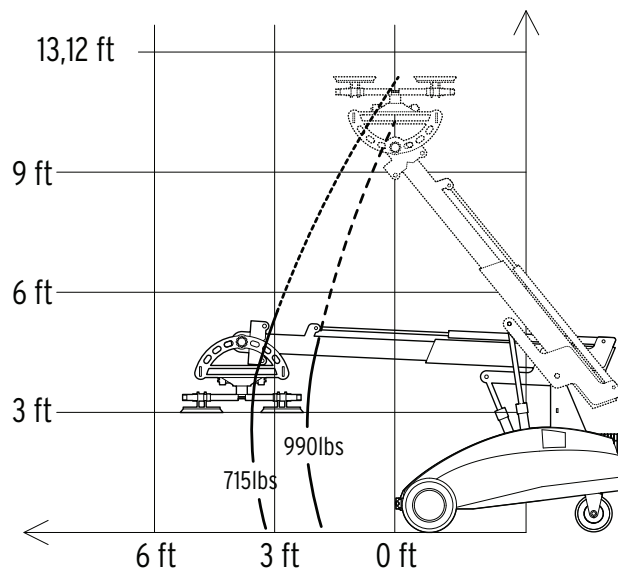


Winlet 1265

REACH DIAGRAM

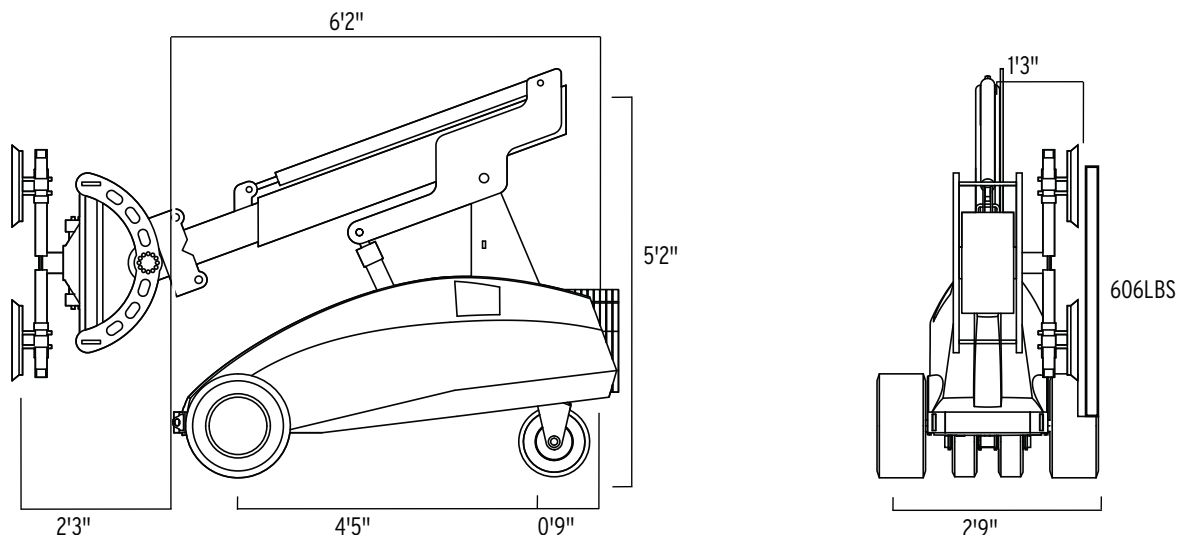


PICKUP AND PLACE DIAGRAM



SPECIFICATIONS*

EXTERNAL LENGTH	6'2"	MAX LIFTING HEIGHT - To center of lifting yoke	11'8"
EXTERNAL WIDTH	2'9"	HYDRAULIC SIDE SHIFT	3'IN
MAX LOAD	1265 LBS	HYDRAULIC FINE LIFT ON ARM	7'9"IN
MAX LOAD AT MAX EXTENSION	605 LBS	HYDRAULIC ROTATION	360 °
MAX SIDE MOUNTED LOAD	605 LBS	TILT FUNCTION OF THE FRONT - Horizontal arm	BACK: 60° FORTH: 86°
TOTAL WEIGHT excl. counterweights	1905 LBS	SUCTION CUPS	4 X 15"
TOTAL WEIGHT incl. counterweights	2335 LBS	BATTERIES	2 X 150 AH
EXTENSION MIN/MAX - Front bumper to suction cup	2'3" / 5'9"	MAX SPEED	0-5 KPH



* The dimensions are indicative and may vary +/- 10mm. The photographs and/or drawings in this document are for illustrative purposes only.



Winlet 880

Build a glazing robot that fits your tasks exactly

The Winlet 880 series is a range of state-of-the-art glazing robots lifting up to 1100 lbs. and designed to meet all needs during window- and glass installations. In this series of glazing robots, the vital parts of the machine are customized to make sure you get exactly the Winlet 880 you need for your projects.

4 main configurations

Over time we have learned that adapting four main parts of the glazing robot to a specific task, will maximize its performance dramatically.


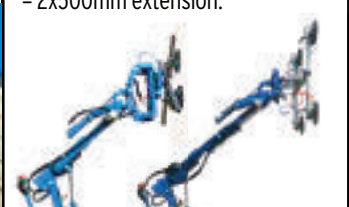
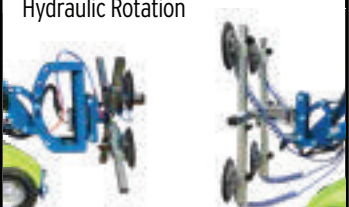

Therefore, we have made it possible to choose between different options within the following four configuration groups: **Wheels, Lifting arm, Front and Control System.**

Our experts are ready to guide you in finding the right model for your projects.



Winlet 880

NB! Please see our separate brochure for detailed information on each Winlet 880 model

<p>WHEELS CL (Compact Lifter) = Narrow wheels TL (Terrain Lifter) = Wide wheels</p> 	<p>LIFTING ARM SHB (Single Hydraulic Boom) = 1x500mm extension. DHB (Double Hydraulic Boom) = 2x500mm extension.</p> 	<p>FRONT HV = Hydraulic Vertical lift HS = Hydraulic Side shift HS/HR = Hydraulic Side shift and Hydraulic Rotation</p> 	<p>CONTROL SYSTEM PSAC = Proportional Single Axis Control. MAC = Multi Axis Control.</p> 
---	---	--	---

TECHNICAL OVERVIEW*

MODEL	MAX LOAD ARM Out / In	MAX SIDE MOUNTED LOAD	MIN/MAX EXTENSION* (Bumper to suction cups)	MAX LIFTING HEIGHT (Vertical cups)	MIN/MAX LIFTING HEIGHT (Horizontal cups down)	MIN/MAX LIFTING HEIGHT (Horizontal cups up)	WEIGHT
Winlet 880CL SHB/HV	440 lbs / 880 lbs	440 lbs	1'5" Ft / 3'1" Ft	8'7" Ft	0 Ft / 2'9" Ft	8'8" Ft / 10'1" Ft	1984 lbs
Winlet 880CL DHB/HV	132 lbs / 694 lbs	440 lbs	1'9" Ft / 5'2" Ft	10'5" Ft	0 Ft / 3' Ft	9'2" Ft / 11'9" Ft	2039 lbs
Winlet 880CL SHB/HS	550 lbs / 1014 lbs	440 lbs	1' Ft / 2'7" Ft	8'4" Ft	0 Ft / 3'2" Ft	8'3" Ft / 9'6" Ft	1929 lbs
Winlet 880CL DHB/HS	242 lbs / 880 lbs	440 lbs	1'5" Ft / 4'8" Ft	10'2" Ft	0 Ft / 3'5" Ft	8'7" Ft / 11'4" Ft	1984 lbs
Winlet 880TL SHB/HV	496 lbs / 903 lbs	440 lbs	1'5" Ft / 3'1" Ft	8'7" Ft	0 Ft / 2'9" Ft	8'8" Ft / 10'1" Ft	2010 lbs
Winlet 880TL DHB/HV	187 lbs / 760 lbs	440 lbs	1'9" Ft / 5'2" Ft	10'5" Ft	0 Ft / 3' Ft	9'2" Ft / 11'9" Ft	2065 lbs
Winlet 880TL SHB/HS	628 lbs / 1102 lbs	440 lbs	1' Ft / 2'7" Ft	8'4" Ft	0 Ft / 3'9" Ft	8'3" Ft / 9'6" Ft	1955 lbs
Winlet 880TL DHB/HS	286 lbs / 915 lbs	440 lbs	1'5" Ft / 4'8" Ft	10'2" Ft	0 Ft / 3'5" Ft	8'7" Ft / 11'4" Ft	2010 lbs
Winlet 880TL DHB/HS/HR	286 lbs / 915 lbs	440 lbs	1'5" Ft / 4'8" Ft	10'2" Ft	0 Ft / 3'5" Ft	8'7" Ft / 11'4" Ft	2076 lbs

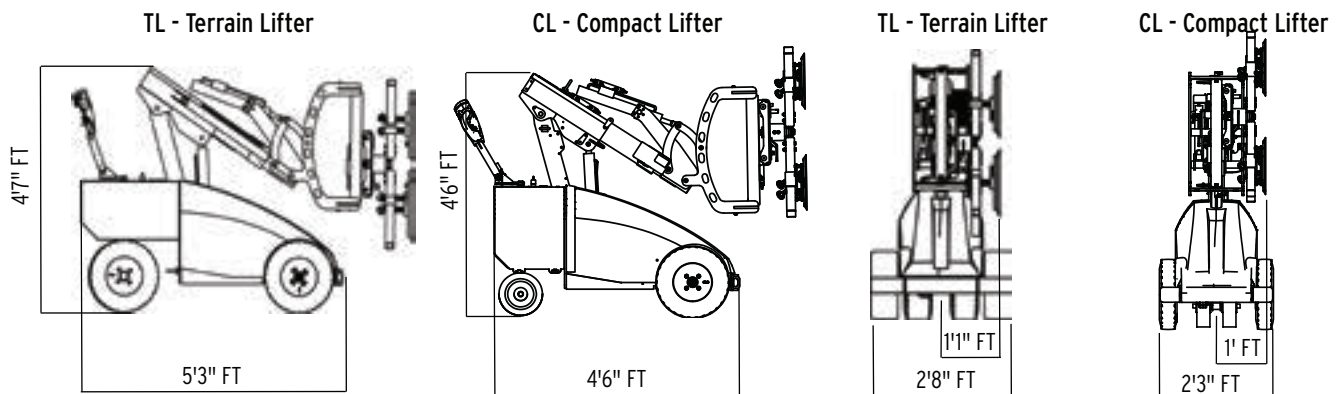
SPECIFICATIONS*

SIDE SHIFT - 100% linear movements
 HYDRAULIC FINE LIFT - Only relevant on HV front
 ROTATION OF FRONT**
 FRONT WHEEL DRIVE - 24V AC transaxle
 SUCTION CUPS

4'3" FT
 0'7" FT
 360 °
 1200 W
 4 X Ø310 (Ø360 / Ø410 MM***)

OPERATING HOURS - On fully charged batteries
 MAX SPEED
 SUITABLE FOR OUTDOOR USE - Water resistant
 INTEGRATED LIFTING EYE - For lifting of the Winlet
 BATTERIES

12 HOURS
 0-5 KPH
 YES
 YES
 2 X 90 AH



*The dimensions are indicative and may vary +/- 10mm. The photographs and/or drawings in this document are for illustrative purposes only.

**Winlet 880TL DHB HS HR with hydraulic rotation

***Optional



Winlet 825

Maximum capacity - minimum space

Winlet 825 combines superior lifting capacity and reach with a unique and compact design.

With Winlet 825, you can handle heavy elements up to 825 lbs bringing them through rough terrain and narrow doorways.

Due to the compact design, confined spaces such as elevators and balconies are no problem for Winlet 825.

Low weight

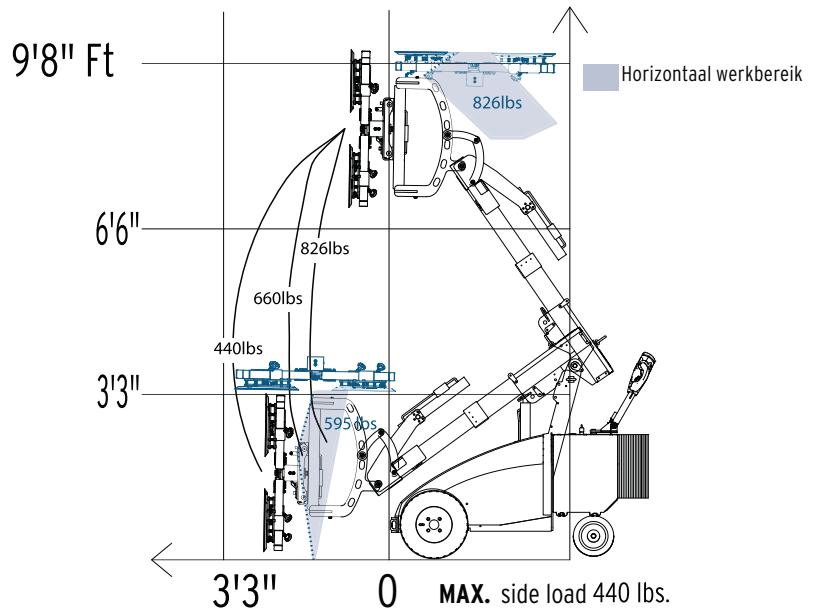
The low weight of Winlet 825 makes it possible to use it where heavier construction equipment cannot be used due to surface pressure.



Winlet 825

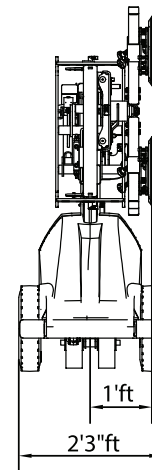
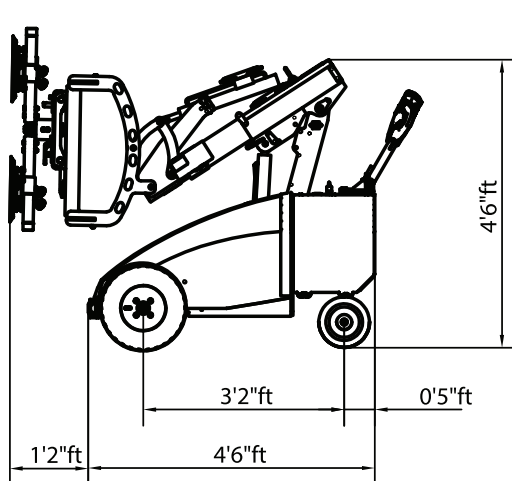


WINLET 825 MAX. LOAD lbs.



SPECIFICATIONS*

EXTERNAL LENGTH	5'1" FT	HYDRAULIC FINE LIFT ON ARM	0'7" FT
WIDTH - Single mounted tires	2'3" FT	TILT FUNCTION OF FRONT - Horizontal arm	BACK: 45° FORTH: 97°
WIDTH - Twin mounted tires	3' FT	ROTATION	ENDLESS
TOTAL WEIGHT - Excl. Counterweights	1274 LBS	SUCTION CUPS	4 X Ø310 MM (Ø360/Ø410 MM)**
TOTAL WEIGHT - Incl. Counterweights	1613 LBS	FRONT WHEEL DRIVE - 24v AC transaxle	1200W
MAX LOAD ARM IN/OUT	826 LBS/ 440 LBS	MAX SPEED	0-5 KPH
MAX SIDE MOUNTED LOAD	440 LBS	BATTERIES	2 X 90 AH
EXTENSION MIN/MAX - Front bumper to suction cup	1'6" FT / 3'1" FT	OPERATING HOURS- On fully charged batteries	12 HOURS
LIFTING HEIGHT MIN/MAX - Horizontal cups down	0 IN / 2'9" FT	SUITABLE FOR OUTDOOR USE- Water resistant	YES
LIFTING HEIGHT MIN/MAX- Horizontal cups up	8'8" FT / 10'1" FT	INTEGRATED LIFTING EYE- For lifting of the Winlet	YES
MANUAL SIDE SHIFT	0'3" FT		



*The dimensions are indicative and may vary +/- 10mm. The photographs and/or drawings in this document are for illustrative purposes only.

**Optional

Lasius...?

Lasius is the Latin name of a species of ant. Ants are small, can get through the smallest passages and despite their size, are very strong and can carry an impressive load. Winlet Lasius has the same characteristics - hence the name.



Winlet Lasius 1t

New opportunities - new savings

Winlet Lasius 1t gives traditional crane and handling solutions tough competition. Its unique performance results in remarkable savings in both time and invested capital.

Winlet Lasius 1t is ideal for:

- Erecting steel beams and other building elements
- Glass and facade installation
- Machine assembly
- Repair work
- Packing of non-palletized goods in containers

The compact design makes it possible to reach where other heavier and bigger machines cannot due to their physical size, surface pressure, turning radius or low lifting capacity.

Winlet Lasius 1t runs with a maximum permitted speed of 4.2 kph - double that of mini cranes on tracks for example. Neither does it need to be leveled by outrigger legs like most mini cranes.

Because the Winlet Lasius 1t is battery-powered and therefore does not emit harmful exhaust gases, it can be used indoors without causing environmental problems.

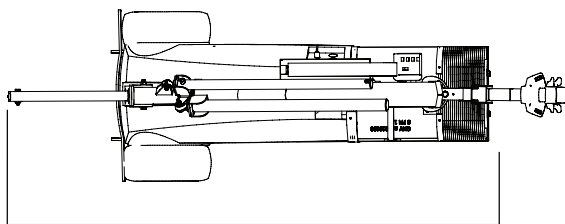
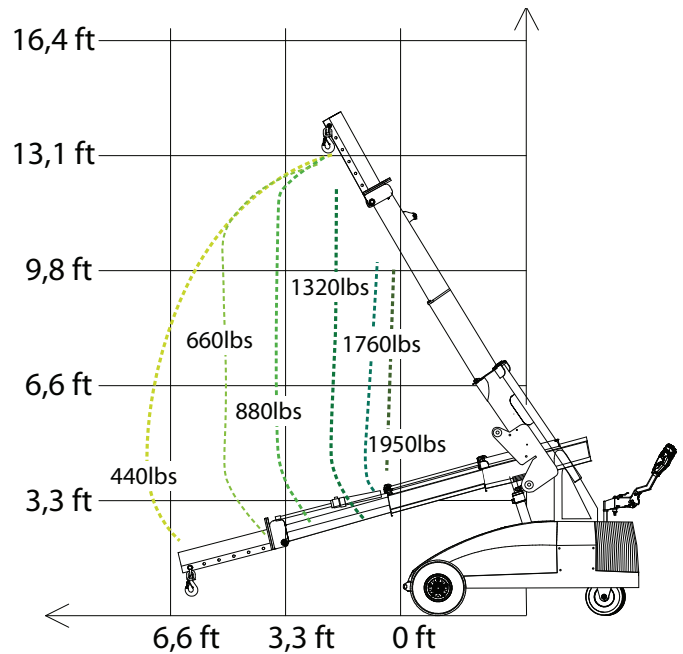


Winlet Lasius 1t

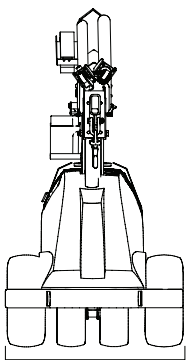
SPECIFICATIONS*

EXTERNAL LENGTH	8'2"
EXTERNAL WIDTH	2'10"
MAX LIFTING CAPACITY	2200 LBS
MAX LIFTING HEIGHT	13'1"
MAX SPEED	0-4.2 KPH
TOTAL WEIGHT excl. counterweights	2314 LBS
TOTAL WEIGHT incl. counterweights	2921 LBS
BATTERIES	2 x 150 AH
OPERATING HOURS - On fully charged batteries	12 HOURS
CHARGING TIME	8-10 HOURS

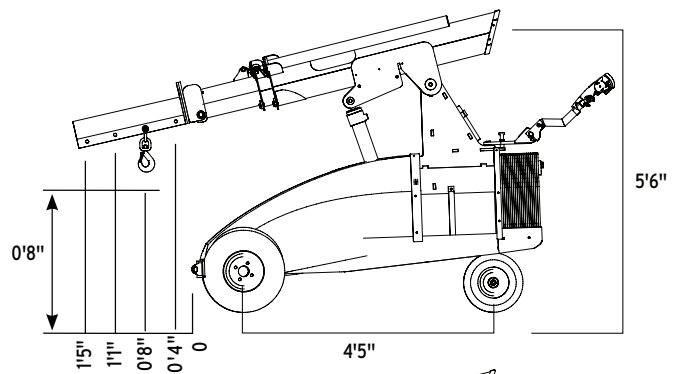
LIFTING DIAGRAM MAX. LOAD 2200 LBS



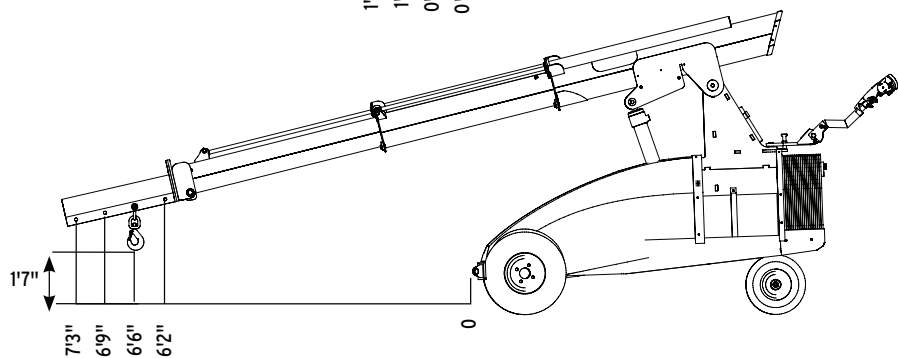
8'2"



2'10"



5'6"



* The dimensions are indicative and may vary +/- 10mm. The photographs and/or drawings in this document are for illustrative purposes only.

NEW!
3.300 LBS LIFTING CAPACITY
POWER ASSISTED STEERING

Winlet Lasius 1,5t

Winlet Lasius - with even more lifting capacity

We have upgraded our traditional Winlet Lasius with an impressive lifting capacity of up to **3.300 lbs.** Besides optimizing on lifting capacity, we have also given the Winlet Lasius 1,5t more reach and maneuverability (power assisted steering).

This will give the traditional crane and handling solutions even more competition.

Winlet Lasius 1,5t is ideal for:

- Erecting steel beams and other building elements
- Glass and facade installation
- Machine assembly
- Repair work
- Packing of non-palletized goods in containers

As the traditional Winlet Lasius, the 1,5t version runs with a maximum permitted speed of 4.2 kph - double that of mini cranes on tracks for example. Neither does it need to be leveled by outrigger legs like most mini cranes.

Because the Winlet Lasius 1,5t is battery-powered and therefore does not emit harmful exhaust gases, it can be used indoors without causing environmental problems.

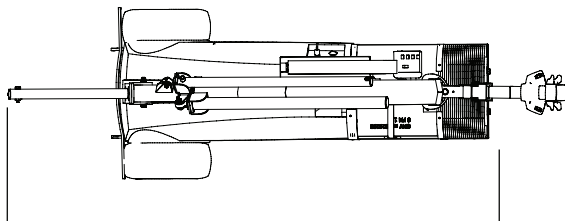
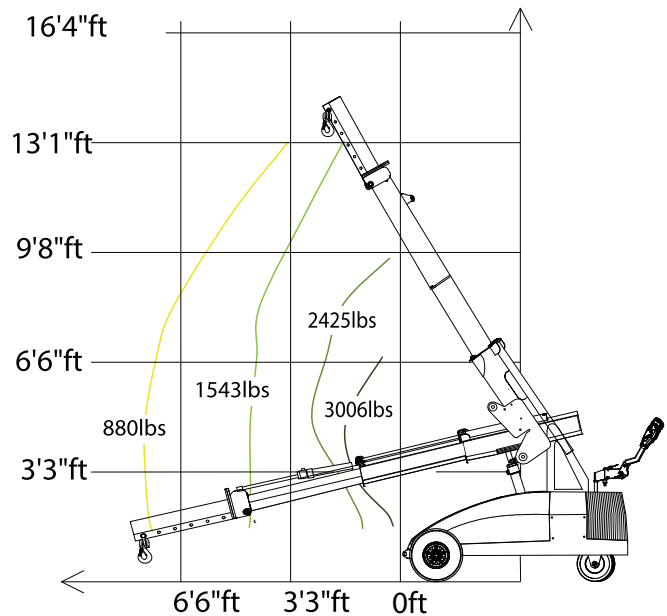


Winlet Lasius 1,5t

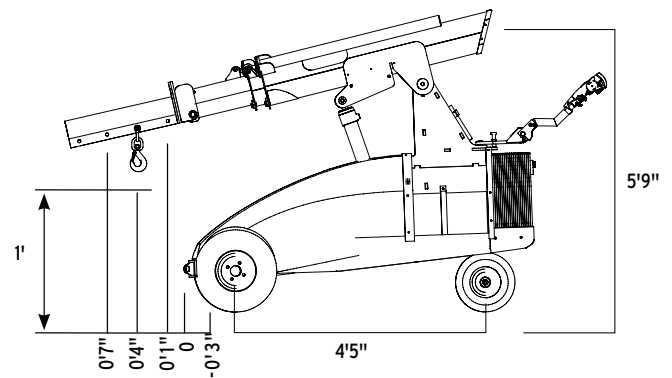
SPECIFICATIONS*

EXTERNAL LENGTH	7'9" FT
EXTERNAL WIDTH	2'9" FT
MAX LIFTING CAPACITY	3306 LBS
MAX LIFTING HEIGHT	13'9" FT
MAX SPEED	0-4.2 KPH
TOTAL WEIGHT excl. counterweights	2385 LBS
TOTAL WEIGHT incl. counterweights	3384 LBS
BATTERIES	2 x 150 AH
OPERATING HOURS - On fully charged batteries	12 HOURS
CHARGING TIME	8-10 HOURS

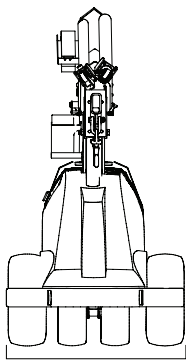
LIFTING DIAGRAM MAX. LOAD 1.500 KG



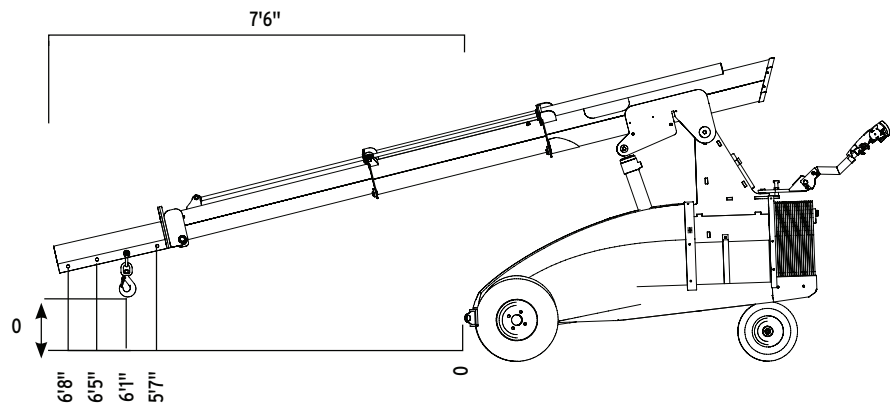
7'9"



5'9"



2'9"



7'6"

0
6'8"
6'5"
6'1"
5'7"

* The dimensions are indicative and may vary +/- 10mm. The photographs and/or drawings in this document are for illustrative purposes only.

Winlet - Superior usability



User friendly operating panels of your choice

Choose between two different types of operating panels for your Winlet:

1. **MAC (Multi Axis Control)**, which allows controlling of more hydraulic functions at a time. The operator can adjust the speed at the levels: 10 % - 50 % - 100 %.*
2. **PSAC (Proportional Single Axis Control)**, the traditional Winlet controls, where one function is operated at a time step-less.

If you need to control the Winlet from a distance, we recommend our radio remote control.

All operating panels are waterproof, according to the IP65 regulations.

Safety first!

All Winlets are equipped with a state-of-the-art overload monitoring system, which continuously measures the point loading on the steering wheels. If point loading is getting too low the system will automatically cut off the hydraulic functions and only allow hydraulic cylinders to bring the load closer to the machine.



*Not available for Winlet 350TH, Winlet 375 and Winlet 600

Winlet accessories



Make the most of your Winlet

Winlet comes with a wide range of accessories. Here is a few of our most popular items:

- **LIFTING FORK & LIFTING HOOK**
 - for lifting of pallets or with straps
- **LIFTING SLING**
 - for lifting the Winlet by crane
- **SHUT-OFF VALVES**
 - on suction cups
- **QUICK CONNECTORS**
 - on suction cups or main supply
- **EXTENSION OF THE BEAMS**
 - customized cross - and main beams
- **RADIO REMOTE CONTROL**
- **QUICK SHIFT FOR TELEHANDLER**

Please consult our experts to find the right accessories for your project.



Lifts all airtight material

All Winlet glazing robots can easily be adapted to lift a wide range of materials by changing the suction cups. This makes Winlet ideal when handling:

- | | |
|---------------|---------------|
| GRANITE | WOODEN PLATES |
| CONCRETE | TILES |
| PLASTERBOARDS | FIRE DOORS |
| STEEL PLATES | |



The company GMV A/S was founded in 1988. In 2008, the company was taken over by Jesper Fauriskov and Erik Pedersen. The vision of GMV is:

GMV must be at the cutting edge of market needs and match these needs by developing unique technical solutions which aid heavy manual lifting in a modern design.

A HEALTHY WORKING ENVIRONMENT MEANS HAPPY EMPLOYEES

GMV provides solutions for heavy manual lifting for the building and manufacturing industries.

CONSULTING, ENGINEERING, AND PLANNING

We are with you from start to finish. We provide qualified advice and listen to your needs.

THE MARKETS BEST SOLUTIONS AND PRODUCT BRANDS

We provide innovative solutions that suit your needs.

LOCAL COMPANY WITH GLOBAL SALES

With our strong dealer network, we sell products worldwide.

EDUCATION AND SERVICE

Our highly trained experts guide and instruct distributors and end users.

ASSEMBLY AND MAINTENANCE CHECK

Our strong team is responsible for assembly and service, both locally and internationally.

PRODUCT DEVELOPMENT

GMV develops products from scratch. Focus is always on providing a good working environment.

MODERN INDUSTRIAL DESIGN

Our award-winning Danish design is combined with unique technical solutions for both the building and manufacturing industries.

DANISH PRODUCTION LINE ACCORDING TO EUROPEAN STANDARDS

We have our own local production and use local suppliers. This ensures local jobs and high quality.

THOROUGH FACTORY TESTING AND DOCUMENTATION

All our products undergo rigorous testing before leaving the factory and comprehensive technical documentation always accompanies our products.

TRAINING FOR SERVICE TECHNICIANS

To ensure that our products will last as long as possible and that local laws are respected, we conduct thorough training with your service technicians - both nationally and internationally.



SALEM
FABRICATION SUPPLIES

Salem Fabrication Supplies

Tel: 800.234.1982

E-mail: info@salemftg.com

5901 Gun Club Road

Winston-Salem, NC 27106

A division of Salem Fabrication Technologies Group, Inc.
We Are 100% Employee Owned

Salem Fabrication Supplies | www.SalemFTG.com